

INITIATIVE

Results-oriented graphic design leader with a passion for driving innovative design and storytelling. Committed to fostering a collaborative environment that inspires creativity and elevates visual communication initiatives.

OVERVIEW

Print and interactive design, marketing and copywriting skill set

Experience with managing, instructing and providing art direction and overseeing junior & senior designers and marketing coordinators

Diverse experience with a wide range of clients and markets

Competent in handling all aspects of a project from conceptualization to production of tangible output

Proficient in solving technical issues in Adobe Creative Suite

TOOLS



EDUCATION

University of Illinois at Chicago
BFA Graphic Design, 1997

AFFILIATIONS
AIGA

FREELANCE HIGHLIGHTS

Parkside Realty
2022 to present

The Chicago French Market
2015 to present

The Healthcare Engineers Society of Northern Illinois (HESNI)
2005 to 2023

Meals on Wheels Chicago Celebrity Chef Brunch
2004

EMPLOYMENT

Cushman & Wakefield

*Design Manager -
Central Region
07/22 to 09/24*

*Senior Designer
05/16 to 07/22*

Multi-disciplined commercial real estate firm specializing in management, leasing, development, investment and consulting

Lead designer for the company's Chicago and midwest region business development, proactive marketing and property leasing initiatives that includes creation of print and interactive PDFs and property branding campaigns

Supervised and provided tutelage for junior & senior designers and marketing coordinators

Initiated best-practices documentation and lead hands-on classes for Adobe Creative Cloud applications and interactive PDFs for the local marketing team and administrative staff

Established Creative Cloud Library of brand assets for the local and regional team to help maintain consistency and enhance workflow

CBRE/ U.S. Equities Realty

*Senior Graphic Designer
02/05 to 05/16*

Multi-disciplined commercial real estate firm specializing in management, leasing, development, investment and consulting

Print, web and HTML email designer for the company's corporate initiative

B2B and B2C integrated print, e-file and interactive concepting and implementation of marketing campaigns for the company's Chicagoland and international portfolio

Supervised and provided tutelage for junior designers and marketing coordinators

Conducted beginner and advanced training in Adobe InDesign for administrative staff nationwide

Appointed to the Senior Design Committee, representing the midwest region, to instill best practices with brand awareness and provide creative leadership for junior designers

Initiated the "Creative Jam Session", a once-a-month gathering of the designers to share their work and experience that also included assignments to foster creativity and collaboration

Tripp Lite Manufacturing

*Graphic Designer
08/00 to 02/05*

A leading, worldwide manufacturer of power protection utilities, battery back-up units and a variety of power maintenance and computer peripheral products

Product specification flyers for sales representatives that focused on technical aspects of the company's vast range of products

Multi-page and format catalog & magazine advertisements for CDW, PC Mall and a variety of other computer and technology resellers

Posters and corresponding flyers for exclusive promotional events with a range of sales goal rewards including iPods, cash, PlayStations and vacation locales

Direct mail pieces of varying sizes and formats targeting resellers about new product announcement and promotional deals

Integrated campaigns that included HTML emails, rich media advertising and target landing pages with banners appearing on such sites as pcmag.com, eweek.com among others including Google ad space

Established departmental print production guide and implemented PDF process that increased productivity and cost efficiency

Created product Owner's Manual style guide to maintain consistency in a multi-designer/copywriter department



MICHAEL KRZEWICKI
GRAPHIC+WEB:DESIGNER

M@MDSGNCHGO.COM
708.705.9015

MDSGNCHGO.COM

11945 S HAMLIN AVE 2A
ALSIP IL 60803

Salani Design
Graphic Designer
01.98 to 05.99

Graphic design and print
production firm

Promotional brochures of varying sizes for a range of
clients and services including mobile disc jockey, industrial
products, logistics outfit, motivational speaker, jewelry of
distinction and private investigation

Production work for the retail packaging of Nature's Finest
homeopathic supplements sold in Walgreens stores

MECHANICAL

MODEL

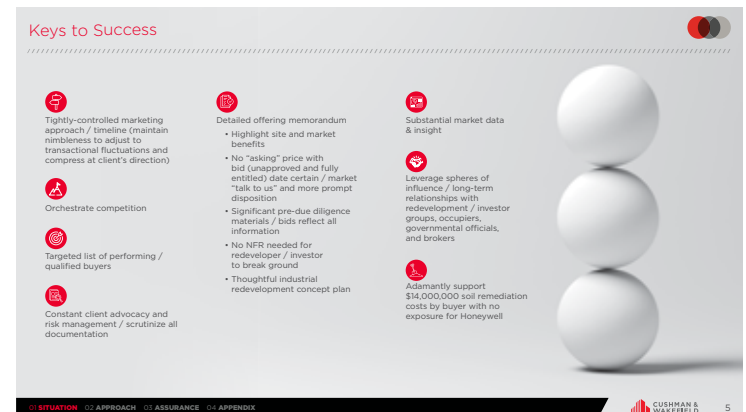
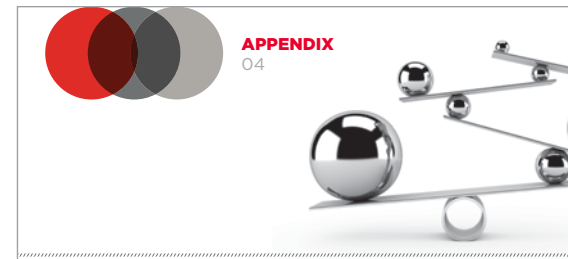
Honeywell

MISSION

Business development presentation for commercial real estate services

MODE

Art direction
Design
On-screen
Print



MARVEL

MODEL

Lurie Children's Hospital

MISSION

Business development presentation for commercial real estate services

MODE

Art direction
Design
Print
Screen



METROPOLIS

MODEL

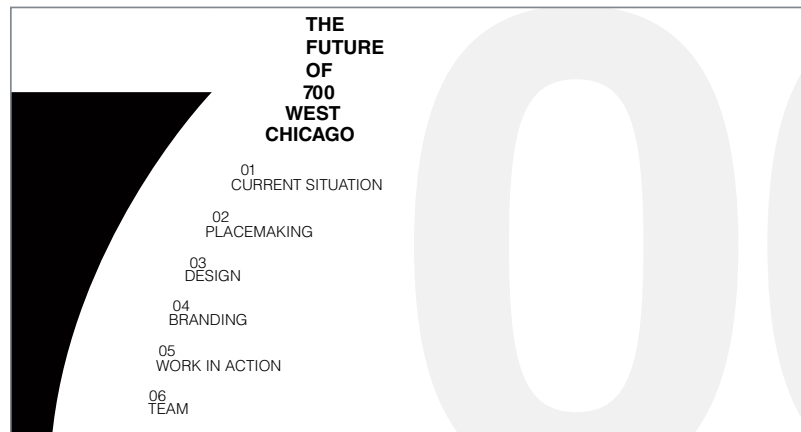
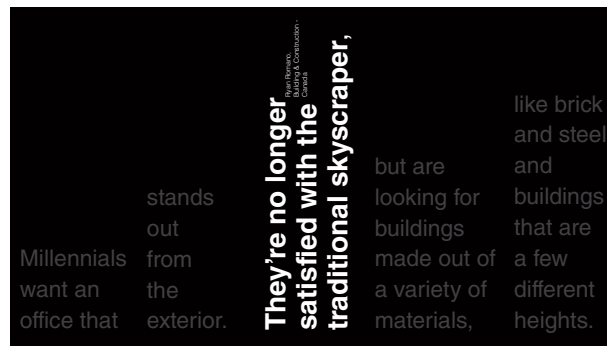
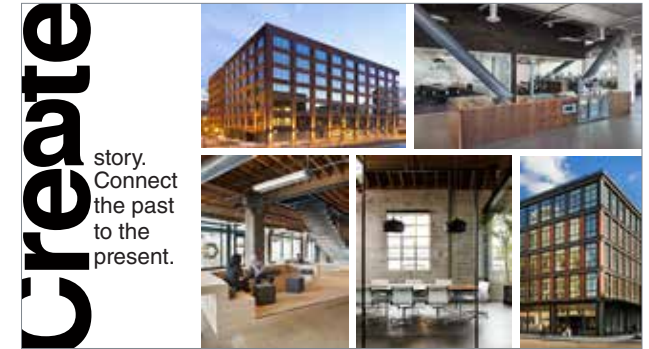
700 W Chicago

MISSION

Commerical real estate
presentation for agency
leasing services

MODE

Art direction
Design
Print



MONEY

MODEL

1043 N. Rush St.

MISSION

Proposal book and logo for retail opportunity in the Gold Coast neighborhood of Chicago

MODE

Art direction

Design

Print



MAY

MODEL

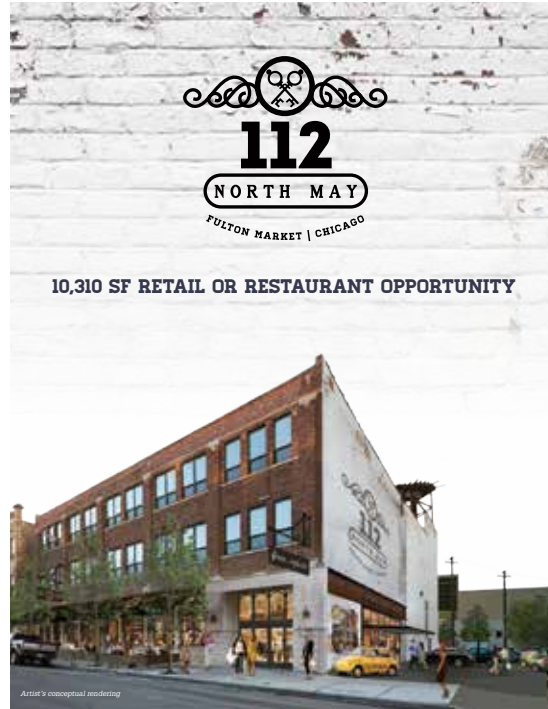
112 N. May St.

MISSION

Book and logo for hipster chic retail space for lease in the West Loop neighborhood of Chicago

MODE

Art direction
Design
Print



-  EXISTING RESTAURANT INFRASTRUCTURE
-  RANDOLPH STREET VISIBILITY
-  90 FEET OF FRONTAGE
-  SIGNIFICANT BRANDING OPPORTUNITIES
-  OUTDOOR SEATING POTENTIAL
-  EXCLUSIVE RETAIL PARKING



Often compared to the development of New York's Meatpacking District in the '90s, the Fulton Market neighborhood is expanding at an exponential rate. The transformation of former factories, wholesale markets and warehouses into the offices of the Google headquarters, WeWork, SRAM and many others is creating exciting opportunities for edgy retailers.

112 North May lies just off Randolph Street at the epicenter of the submarkets booming restaurant corridor. The sites proximity to the flourishing dining and nightlife in addition to the growing residential population creates a one of a kind opportunity in Chicago's fastest growing neighborhood.



MORNING

MODEL

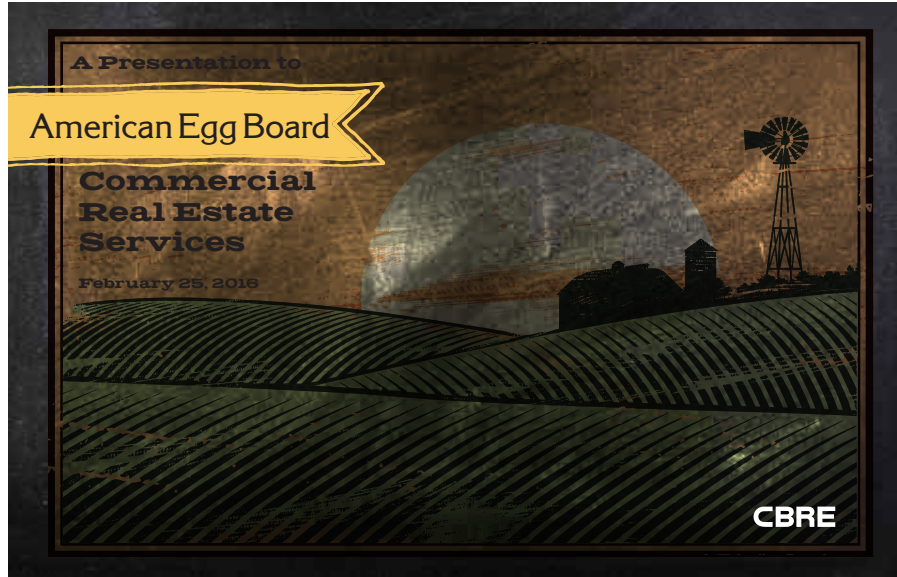
American Egg Board

MISSION

Commercial real estate services proposal book

MODE

Art direction
Design
Print



KEY MARKET CONDITIONS
(OPPORTUNITIES & THREATS)

- Flight to Quality
- Shadow Space
- Rising Rental Rates
- Construction Costs

SCENARIO	PER SQ. FT. GROSS	ANNUAL YEAR 1 RENT	AVERAGE 10 YEAR OCCUPANCY COST	ANTICIPATED OUT OF POCKET PROJECT COSTS FOR RELOCATION
Current Rent (10,800 Sq. Ft.)	\$17.39	\$187,847	-	-
Relocation to Class B Office	\$23.00	\$276,000	\$393,271	\$500,000
Relocation to Class A Office	\$28.50	\$342,000	\$554,310	\$500,000
Relocation to Class B Downtown	\$26.50	\$320,000	\$484,453	\$500,000
Relocation to Class B+ Downtown	\$26.42	\$437,160	\$478,542	\$500,000

Based on relocating to 12,000 square feet of office space. Assumes that new space will not reuse existing conditions.

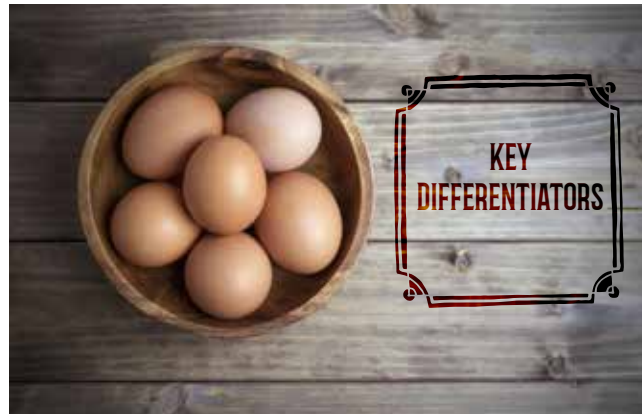


TABLE OF CONTENTS

4 KEY DIFFERENTIATORS	13 RECENT EXPERIENCE
6 TEAM OVERVIEW	16 NONPROFIT EXPERIENCE
8 CURRENT SITUATION	18 UNMATCHED RESOURCES
9 PERCEIVED OBJECTIVES	24 VALUE PROPOSITION
10 APPROACH	APPENDIX
11 SCENARIOS	27 CBRE OVERVIEW
12 POTENTIAL MARKET ALTERNATIVES	

MAJOR

MODEL

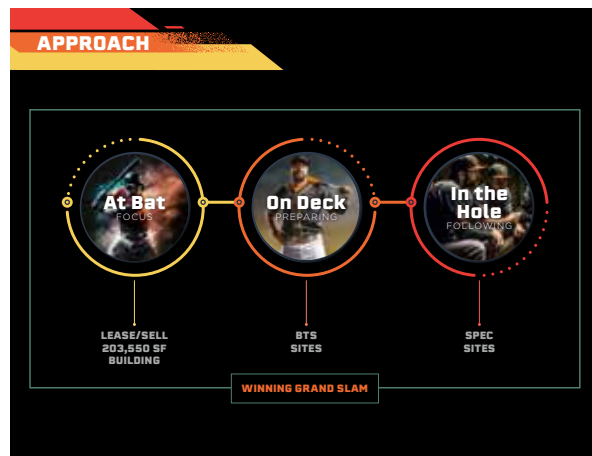
The Missner Group

MISSION

Business development
presentation for commercial
real estate services

MODE

Art direction
Design
On-screen
Print



MARK

MODEL

Miscellaneous logos

MISSION

Visual communication
in it's simplest form

MODE

Art direction
Design



LIA

Therapeutic bath salts



REDHAWK ELECTRIC

Commercial electrician



AMANDA SEARS

Industrial artist



BENSIDOUN USA

Outdoor French Markets



CROSSTOWN NORTH

Industrial business center



MARCHE DE NOEL

Holiday craft market



WASIO

Commercial photographer



3333 Iron Street

Industrial property



708 LAKE STREET

Retail space



GROUNDWERKS CHICAGO

Multi-use commercial property
for former US Steel site



PARK PLACE

Suburban office complex



GREY HAYES TAVERN

Neighborhood pub

MERRIEST

MODEL

Self-Promotion

MISSION

Holiday cards

MODE

Art direction

Print

